



FEASIBILITY STUDY – S 048

ENGINEERING DEPARTMENT

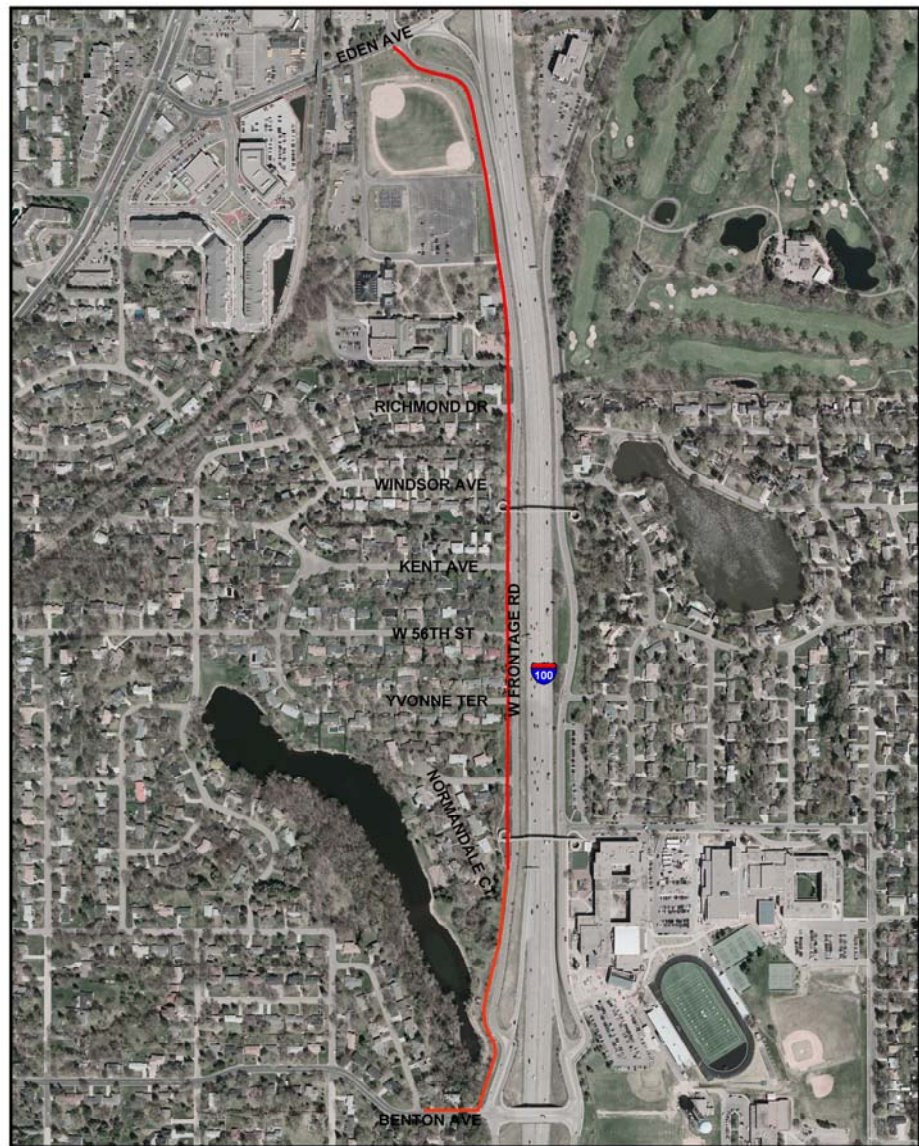
CITY OF EDINA

SIDEWALK IMPROVEMENTS

WEST FRONTAGE ROAD – BENTON AVENUE TO EDEN AVENUE

MAY 20, 2008

LOCATION: The West Frontage Road Sidewalk Project runs along the west side of the West Frontage Road from Benton Avenue north up to Eden Avenue. The sidewalk would be located within City owned property that was turned back after Trunk Highway 100 was constructed. (See Figure 1)



Project Area
Hwy 100 W. Frontage Rd Sidewalk
Improvement No: S048
— Proposed Walk Location



Figure 1. Project Area Map

**Feasibility Study
W. Frontage Rd. Sidewalk Improvement No. S-048
May 20, 2008**

INITIATION & ISSUES: The West Frontage Road sidewalk project was initiated by the Engineering Department as part of the City's Capital Improvement Program to create a pedestrian connection along the west side of Highway 100.

The following are existing features that were used in determining the feasibility of the project and are addressed in this report:

- Barrier created by TH 100 for east/west pedestrian travel.
- Landlocked neighborhood as a result of Melody Lake.
- Under utilization of two existing pedestrian overpasses.
- Steep slopes and grades to Melody Lake along the southern portion of the project.
- Trees and Landscaping.
- TH 100 off ramp at Benton Avenue and existing light poles and guardrail.
- Safety of residents and children.
- Daily vehicle traffic varies from 1928 to 2882 cars per day.
- Vehicle speeds in excess of 35mph (85% varies from 34 mph to 39 mph).

EXISTING CONDITIONS: The existing roadway is a bituminous surface with concrete curb and gutter. The roadway width varies from 28 to 31 feet wide. (See Photos 1 and 2).



Photo 1. Looking North on West Frontage Road



Photo 2. Looking North by Our Lady of Grace School and Church

Currently there is some sidewalk within the neighborhood but with the little amount of sidewalk most of the pedestrian movements occur on the street network.

Traffic volumes vary from 1928 to 2882 cars per day and speeds along the West Frontage Road are in excess of 35 mph (see attachment H).

RESIDENT INVOLVEMENT:

City staff kicked off the project by sending out an informational newsletter and questionnaire to the 153 residents of the neighborhood on March 24, 2008 to inform them of the project.

A neighborhood informational meeting was held on April 10, 2008 to provide information, gather data and answer questions the homeowners had relating to the project. Ten residents attended this meeting, representing approximately four to five households. Input from this meeting and comments received throughout the planning of this project have been included in this report as attachments.

**Feasibility Study
W. Frontage Rd. Sidewalk Improvement No. S-048
May 20, 2008**

**PROPOSED
IMPROVEMENTS:**

The West Frontage Road Sidewalk Improvements consist of a 5 foot wide boulevard style concrete walk (see photo 3) from Benton Avenue north to Eden Avenue on the west side of the road. (See Figure 1) Currently there is concrete curb and gutter and the sidewalk will be constructed with little disturbance to the existing concrete curb and gutter.



Photo 3. Boulevard Style Sidewalk



Photo 4. Steep Slopes

**Feasibility Study
W. Frontage Rd. Sidewalk Improvement No. S-048
May 20, 2008**

**RIGHT-OF-WAY
& EASEMENTS:**

This project utilizes the existing City owned strip of right of way that runs parallel to the frontage road from Benton Avenue to Eden Avenue. All proposed improvements stay within this right-of-way and no additional easement requirements are anticipated.

PROJECT COSTS:

The total estimated project cost is \$240,000.00. The total cost includes indirect costs of 15% for engineering and clerical costs and 7.5% for first year finance costs. This is identified in the Capital Improvement Program. Funding for this project is from the construction funds.

ASSESSMENTS:

This project is funded by the City; therefore there is **NO** special assessment to any property owners.

PROJECT SCHEDULE:

The following schedule is feasible from an Engineering standpoint:

Informational Meeting/Open House.....	April 10, 2008
Council Orders Public Hearing	April 15, 2008
Receive Feasibility Report.....	May 20, 2008
Public Hearing	May 20, 2008
Bid Opening	June 2008
Award Contract	July 2008
Begin Construction	Summer 2008
Complete Construction	Fall 2008

FEASIBILITY:

Staff believes the construction of this project is necessary, cost effective and feasible to create a safe pedestrian link along the West Frontage Road. The project will connect a land locked neighborhood, two pedestrian overpasses to the Community Center/Schools and a church.

ATTACHMENTS:

- A. Informational Newsletter
- B. Informational Meeting Attendance List
- C. Information Meeting PowerPoint Presentation
- D. Project comments and Letters Received
- E. Recommendation to Set Public Hearing/Resolution
- F. Public Hearing Notices, Certificate of Mailing and List of Labels
- G. Preliminary Cost Estimate
- H. Traffic Counts